



**NOAA
FISHERIES**

Review of the 2021 Texas Closure

Lew Coggins

NOAA Fisheries

Southeast Fisheries Science Center

Gulf Branch - Sustainable Fisheries Division

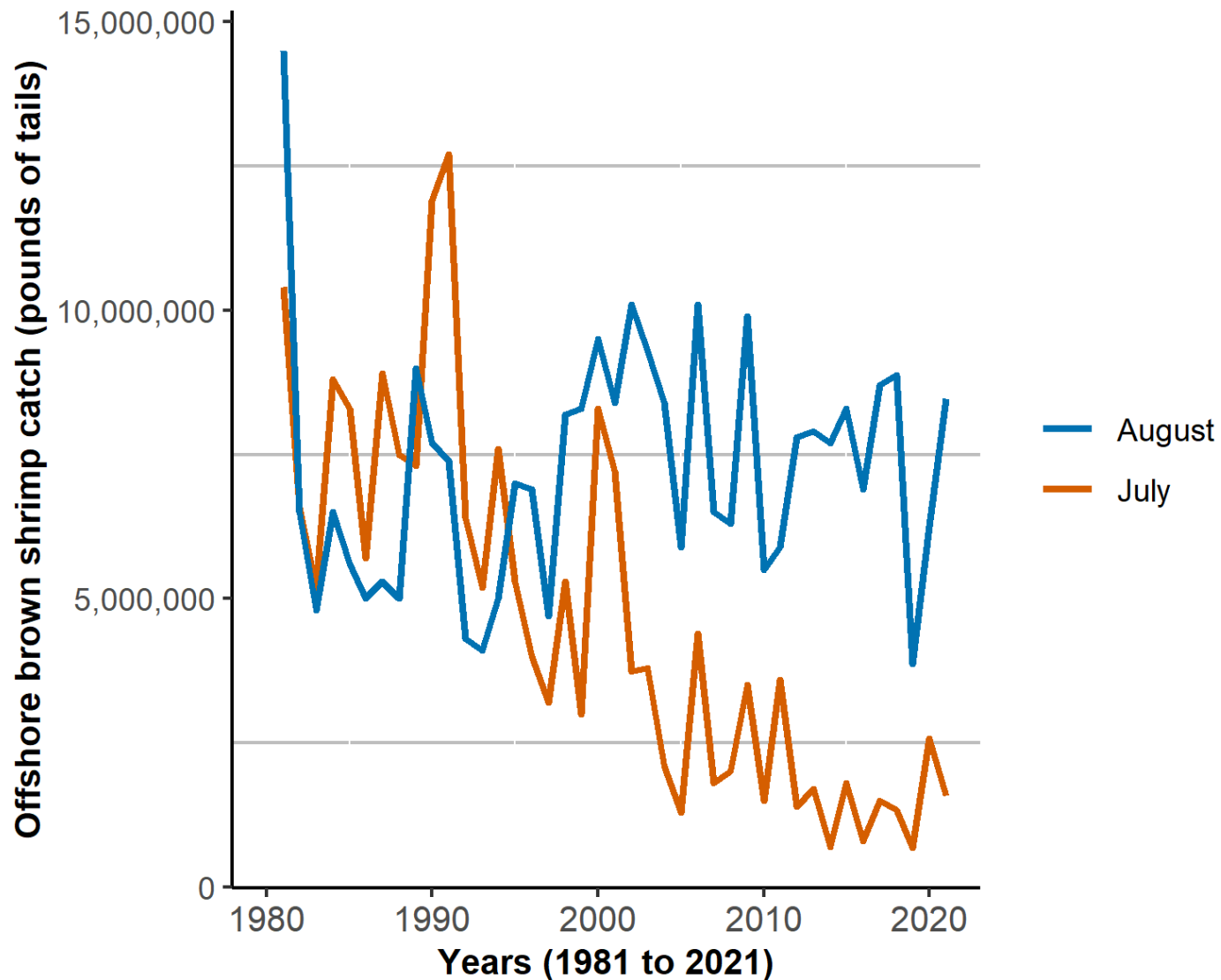
Shrimp Advisory Panel Meeting

March 2022

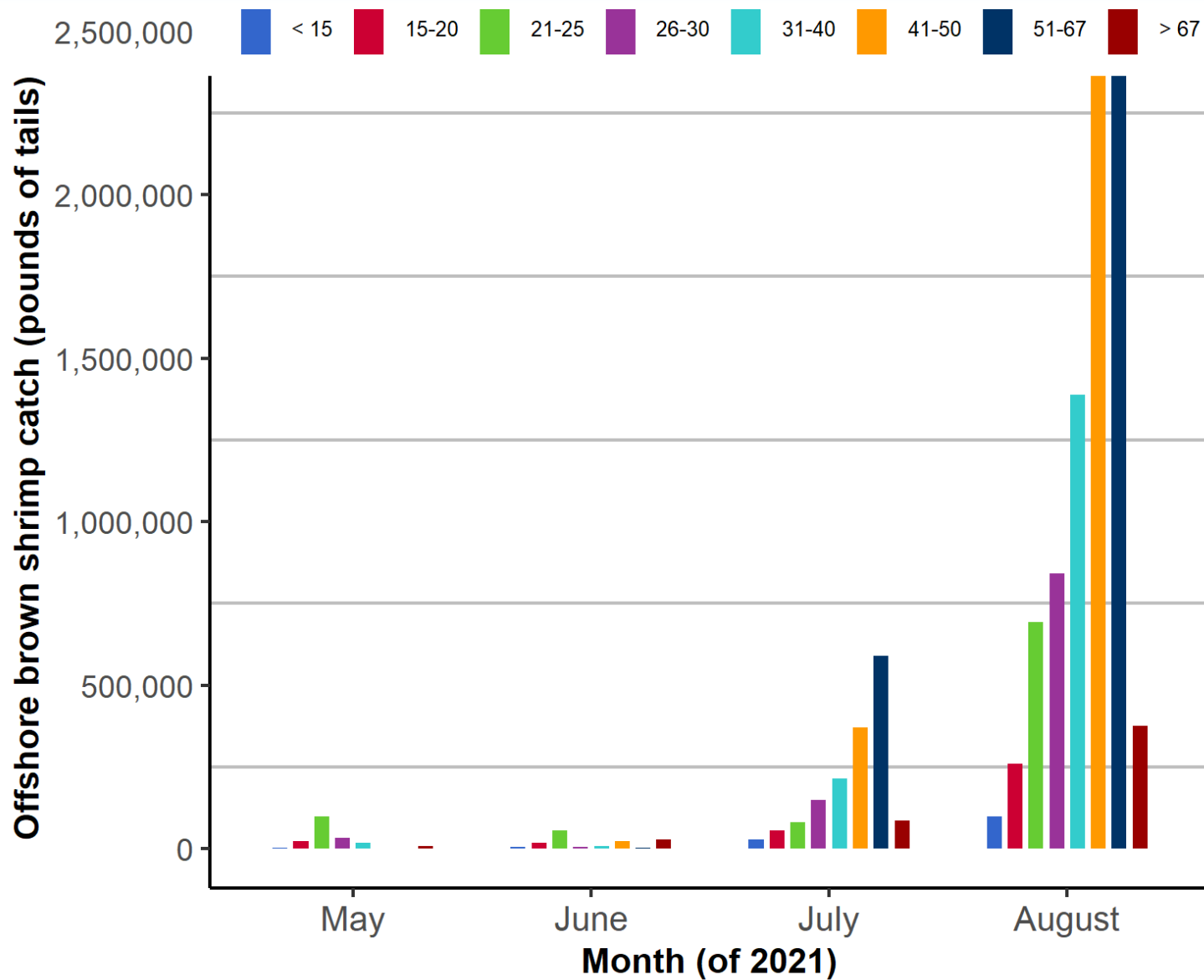
History of the Texas Closure

The GMFMC's Shrimp FMP was implemented in 1981 for the EEZ fishery.

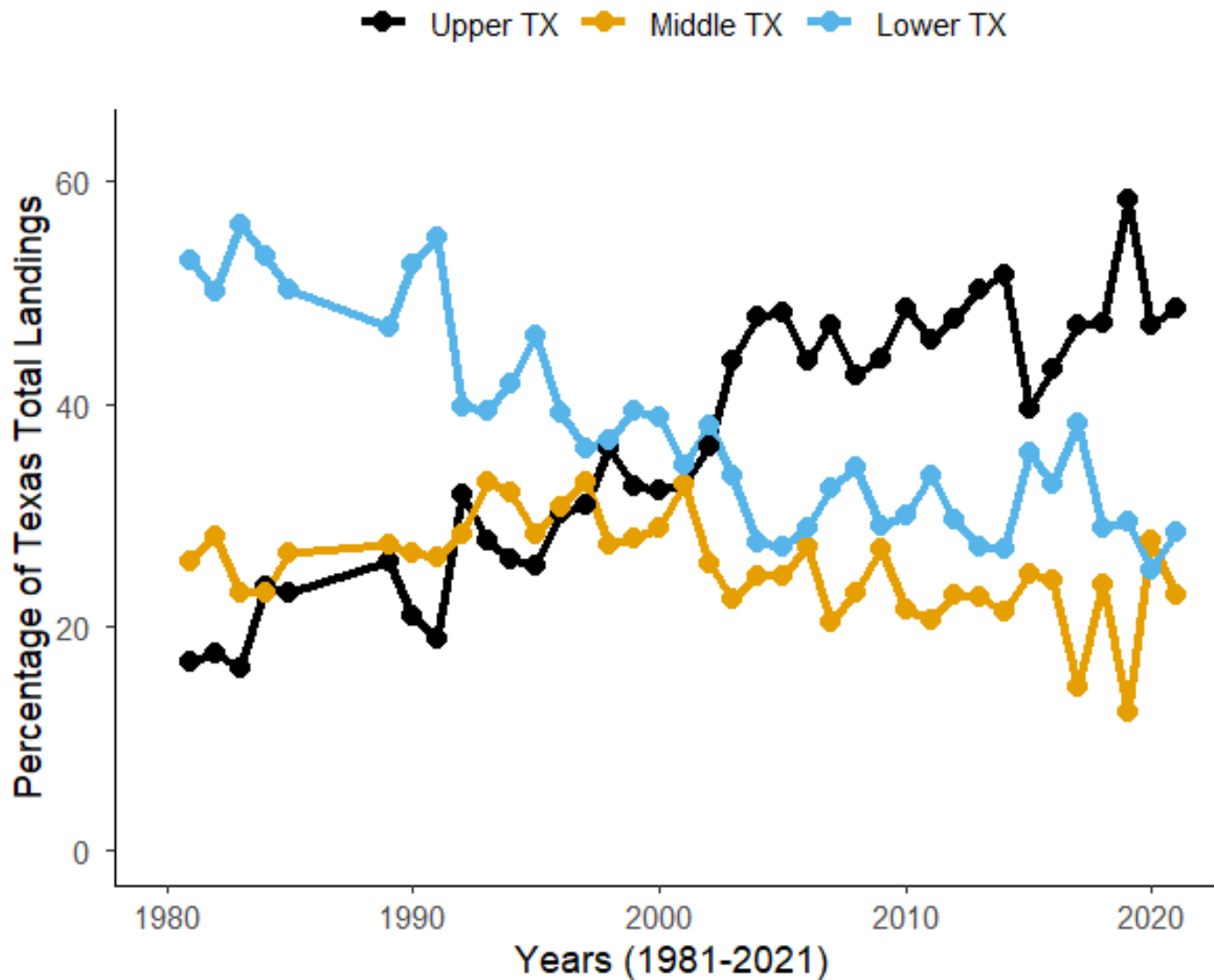
- Goal was to increase the yield of brown shrimp harvested from offshore Texas waters.
- Historically the closure is from Mid-May to Mid-July.
- Since 1990 the near-shore (< 4 fathoms area) has also been closed in conjunction.



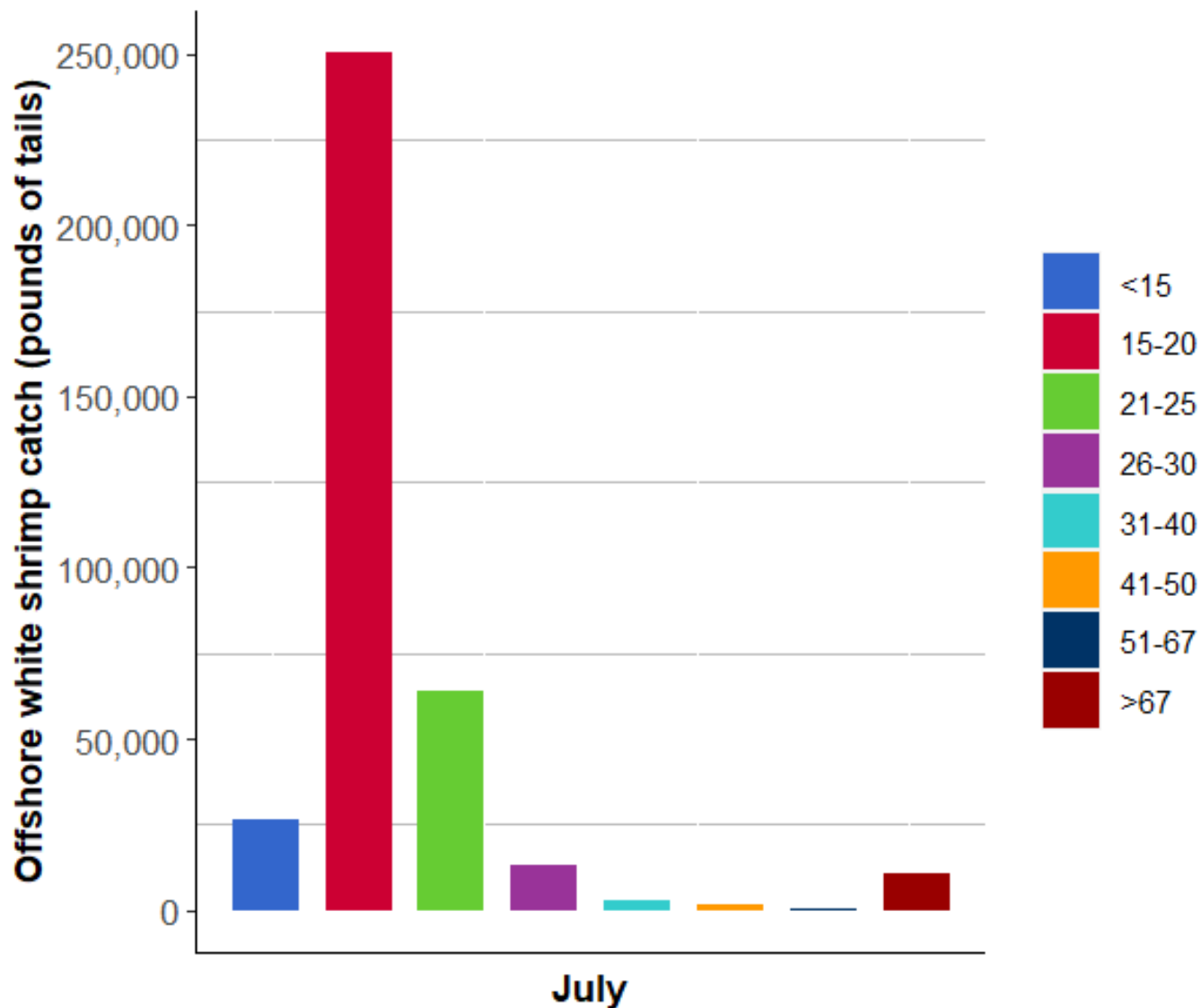
Offshore TX Brown Shrimp Catch for July and August, 1981-2021



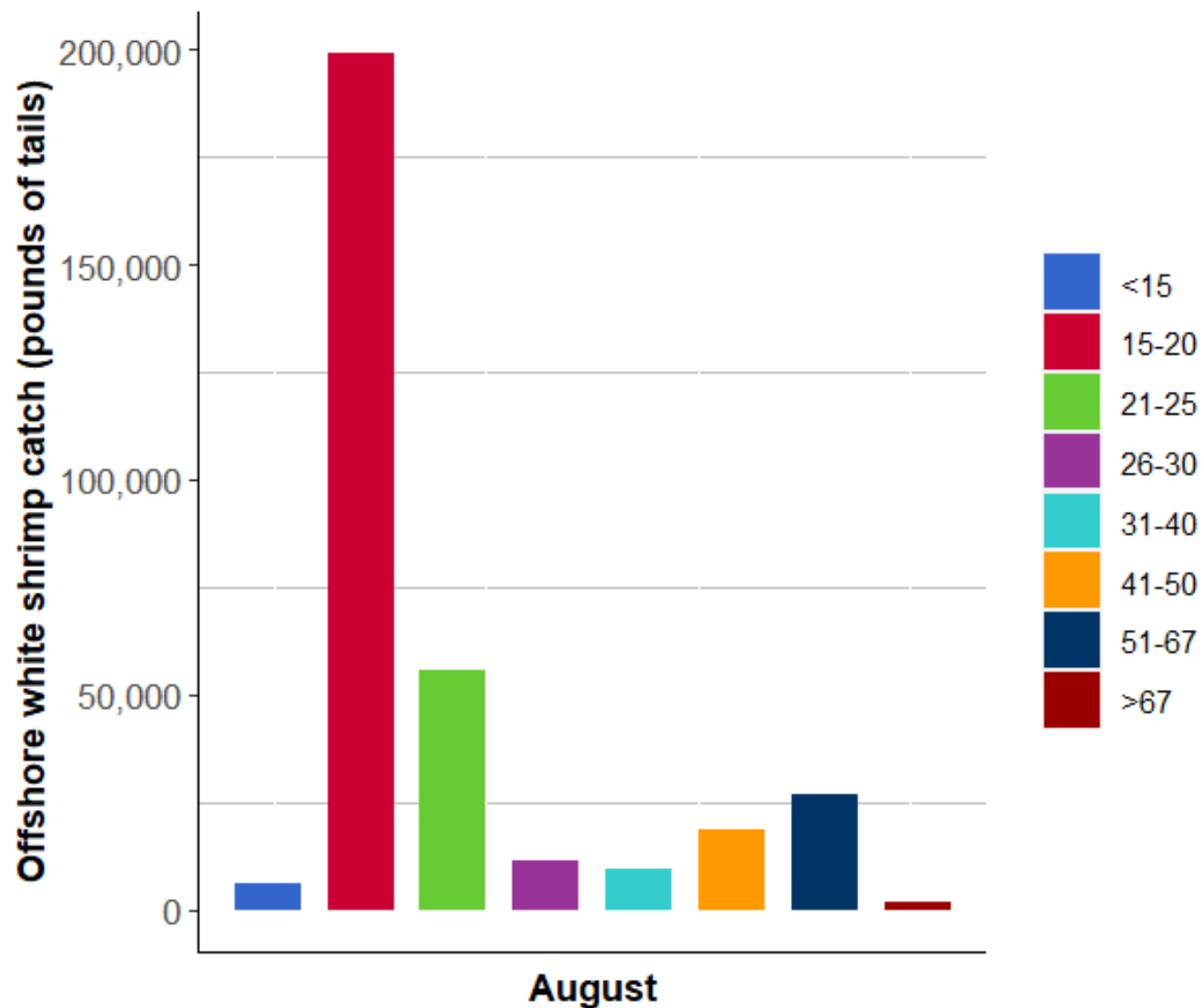
Monthly Offshore TX Brown Shrimp Catch for May – August, 2021



Texas Shrimp Landings by Region (Upper, Middle and Lower), in May-August



Offshore Texas White Shrimp Catch for July, 2021



Offshore Texas White Shrimp Catch for August, 2021

Summary: Texas Fishing Trends

- Inshore TX Brown Shrimp catch in May-August is below the historical average (511,194 lbs. < 4.3 M lbs).
- Offshore TX Brown Shrimp catch in May-August is below the historical average (10.4 M < 13.6 M lbs.).
- July-August offshore landings in the >67 count size category comprised only 4.6% of the catch.

Summary: Texas Shrimp Landings by Region

- The upper and lower Texas regions experienced a slight proportional increase in landings relative to last year, whereas the proportion of landings in the middle Texas region was slightly lower this year.

Summary: White Shrimp landings

- 2021 White Shrimp catch off Texas in July was below the July average (368,962 lbs < 442,409 lbs) across previous years (1980-2020).
- 2021 White Shrimp catch off Texas in August was below the August average (328,251 lbs < 517,800 lbs) across previous years (1980-2020).
- Most of the White shrimp caught off Texas in July-August 2021 were in the 15-20 size count category.

Western Gulf of Mexico Brown Shrimp Production Forecast Discontinued

- Historically, NOAA Fisheries Galveston Lab forecasted brown shrimp production in the western GOM (July-June).
 - **Galveston Bay Bait Index (Baxter Index)**
 - NOAA Fisheries Staff sampled Galveston Bay bait fishers.
 - **Louisiana Index Model**
 - Port Agents collected inshore and offshore landings data .
 - **Environmental Model**
 - Uses Galveston air temperature in mid-April, March rainfall, and bay water height late-April to early-May.

Thank You

